



(Previously Known as Mother Dairy, Gandhinagar)

Request for Quotation (RFQ)

AFD: PUR: HSG: MCC 4 for OPP.

02 Sept., 2024

To,

Dear Sir,

Sub: **Request for Quotation (RFQ)** for “**Compacting MCC-4 for OPP on buy back basis**” as mentioned in annexure.

We invite your most competitive offer for **Compacting MCC-4 for OPP on buy back basis** as per detailed specifications. Your offer should be based on following considerations:

1.The offer should reach:-AmulFed Dairy (Previously known as Mother Dairy-A Unit Of GCMMF Ltd) Plot No-35, Nr. Indira Bridge, Ahmedabad - Gandhinagar Highway. Village Bhat, Dist - Gandhinagar. Pin - 382 424.

2. Due Date: **Technical due September 09, 2024 before 14:00 hours.**

Commercial due September 10, 2024 before 17:00 hours.

3. The offer should be submitted in portal only. First of all register your firm on shared link.

4. Offer received after due date for whatsoever reason may be rejected.

5. Offer should valid for acceptance for 90 days from date for submission of offer.

6. The price should be quoted with all details.

7. **Specify your tax condition.** Non indication of above levies will mean that prices are inclusive of all taxes and above levies.

8. Realistic and earliest completion period should be indicated in offer.

9. It will not be binding on us to accept the lowest offer.

10. Right to accept/reject any/all offers without assigning reason is reserved by us.

11. Offers which are incomplete or not meeting the conditions are liable for rejection.

12. Payment terms after successful installation and commissioning of MCC within 30 days of invoice receipt. If the payment term is document through bank, all banking charges shall be borne by the suppliers.

13. **Please find below link to register your firm on Purchase Portal. Without completing registration process on portal can't submit offer.**

First of all register your firm on shared link so can send inquiry through portal only.

Plot No. 35, Nr. Indira Bridge, Ahmedabad-Gandhinagar Highway, Village: Bhat, Dist.:Gandhinagar, PIN 382428

Tel. No. (+91-79) 23969055 – 58, Fax No. (+91-79) 23969059

Website: www.amul.com

AmulFed Dairy

A UNIT OF GUJARAT CO-OPERATIVE MILK MARKETING FEDERATION LIMITED

(Previously Known as Mother Dairy, Gandhinagar)

Interested bidders have to register your firm in our Purchase portal.

Website for our portal is as >>>: <http://afdpurchase.amul.in/>

Click Below links for Guidelines :

1. [Guide for VRF - MANUFACTURERS](#)

14. **Eligibility criteria: Must have executed similar type of order in last 5 year. Share credentials of the same.**
15. **Once registration process completes, we invite vendor to submit offer. Vendors need to submit technical first only after technical clearance you will be able to submit commercial figures.**

We are an ISO 9001: 2015, ISO 14001:2015, ISO 22000:2018, ISO 50001:2018 and ISO 45001:2018 company; we follow sustainable eco-friendly processes in our organization and expect the same to be followed at your end. We emphasis on energy efficient system and utilization of renewable energy systems in eco-friendly and sustainable way.

Note: If required please visit premises with prior confirmation before quote. Please arrange visit between 2:00 P.M. to 5:00 P.M. in working day.

: We may go for reverse auction/negotiation. If required we may ask for PBG.

Mail id as mentioned below.

Shri Hardik Gajjar : hardik.gajjar@amul.coop

Shri Bharat Naik : bharat.naik@amul.coop

Shri Gaurav : Gaurav.desai@amul.coop

Yours Faithfully,

For AmulFed Dairy,

Purchase Depart.

Plot No. 35, Nr. Indira Bridge, Ahmedabad-Gandhinagar Highway, Village: Bhat, Dist.:Gandhinagar, PIN 382428

Tel. No. (+91-79) 23969055 – 58, Fax No. (+91-79) 23969059

Website: www.amul.com

COMPACTING MCC - 4 FOR OPP - TECHNICAL SPECIFICATION

A) NON-COMPARTMENT- MCC FOR OLD POWDER PACKING PLANT:

Sr. No.	Description	Type	Rating
1	Incomer	MCCB -Four Pole ,50 kA with ROM with MP based OC, SC & EF protection released with RS485 multi-function meter. R/Y/B/ON/OFF/TRIP INDICATION	630 A
2	SYNTAGON PKG MACHINE	TPN-MCB	63 A
3	ARODO 25KG PGK LINE	TPN-MCB	63 A
4	HASSIA 250+180TC+LONG CONVEYOR	TPN-MCB	63 A
5	BOSCH PKG M/C	TPN-MCB	63 A
6	DRY BLEBDER MIXTURE	TPN-MCB	63 A
7	3GM/5GM/ MACHINE	TPN-MCB	63 A
8	MACHINE-1	TPN-MCB	63 A
9	MACHINE-2	TPN-MCB	63 A
10	MACHINE-3	TPN-MCB	63 A
11	MACHINE-4	TPN-RCCB-300mA	63 A
12	MACHINE-5	DP-MCB	25A
13	MACHINE-6	DP-MCB	25A
14	MACHINE-7	DP-ELCB-30mA	25A
14	MACHINE-8	MCCB -Four Pole 36 kA with ROM with MP based OC, SC & EF protection released. R/Y/B/ON/OFF/TRIP INDICATION	160 A
15	BIN ACTIVATOR SILO-1	DOL (AUTO-OFF-MANUALSWITCH)	0.6KW

AmulFed Dairy

A UNIT OF GUJARAT CO-OPERATIVE MILK MARKETING FEDERATION LIMITED

(Previously Known as Mother Dairy, Gandhinagar)

		ON-OFF PB WITH INDICATION/TRIP 24 V RELAY FOR ON/OFF, RUN FEED BACK (MPCB-1.4-2.3A+CONTACTOR-9A)	
16	BIN ACTIVATOR SILO-2	DOL (AUTO-OFF-MANUALSWITCH) ON-OFF PB WITH INDICATION/TRIP 24 V RELAY FOR ON/OFF, RUN FEED BACK (MPCB-1.4-2.3A+CONTACTOR-9A)	0.6KW
17	BIN ACTIVATOR SILO-3	DOL (AUTO-OFF-MANUALSWITCH) ON-OFF PB WITH INDICATION/TRIP 24 V RELAY FOR ON/OFF, RUN FEED BACK (MPCB-1.4-2.3A+CONTACTOR-9A)	0.6KW
18	ROTARY VALVE	DOL (AUTO-OFF-MANUALSWITCH) ON-OFF PB WITH INDICATION/TRIP 24 V RELAY FOR ON/OFF, RUN FEED BACK (MPCB-1.4-2.3A+CONTACTOR-9A)	0.37KW
19	ROTARY SHIFTER	DOL (AUTO-OFF-MANUALSWITCH) ON-OFF PB WITH INDICATION/TRIP 24 V RELAY FOR ON/OFF, RUN FEED BACK (MPCB-6-12A+CONTACTOR-16A)	4 KW
20	VIBRATING TUBE BAG FILLING LINE-1	DOL (AUTO-OFF-MANUALSWITCH) ON-OFF PB WITH INDICATION/TRIP 24 V RELAY FOR ON/OFF, RUN FEED BACK (MPCB-1.4-2.3A+CONTACTOR-9A)	0.45
21	VIBRATING TUBE BAG FILLING LINE-2	DOL (AUTO-OFF-MANUALSWITCH)	0.45

AmulFed Dairy

A UNIT OF GUJARAT CO-OPERATIVE MILK MARKETING FEDERATION LIMITED

(Previously Known as Mother Dairy, Gandhinagar)

		ON-OFF PB WITH INDICATION/TRIP 24 V RELAY FOR ON/OFF, RUN FEED BACK (MPCB-1.4-2.3A +CONTACTOR-9A)	
22	VIBRATING TUBE PS-1-A	DOL (AUTO-OFF-MANUALSWITCH) ON-OFF PB WITH INDICATION/TRIP 24 V RELAY FOR ON/OFF, RUN FEED BACK (MPCB-1.4-2.3A +CONTACTOR-9A)	0.45
23	VIBRATING TUBE PS-1-B	DOL (AUTO-OFF-MANUALSWITCH) ON-OFF PB WITH INDICATION/TRIP 24 V RELAY FOR ON/OFF, RUN FEED BACK (MPCB-1.4-2.3A +CONTACTOR-9A)	0.45
24	VIBRATING TUBE PS-2-A	DOL (AUTO-OFF-MANUALSWITCH) ON-OFF PB WITH INDICATION/TRIP 24 V RELAY FOR ON/OFF, RUN FEED BACK (MPCB-1.4-2.3A +CONTACTOR-9A)	0.45
25	VIBRATING TUBE PS-2-B	DOL (AUTO-OFF-MANUALSWITCH) ON-OFF PB WITH INDICATION/TRIP 24 V RELAY FOR ON/OFF, RUN FEED BACK (MPCB-1.4-2.3A +CONTACTOR-9A)	0.45
26	VIBRATING TUBE PS-3-A	DOL (AUTO-OFF-MANUALSWITCH) ON-OFF PB WITH INDICATION/TRIP 24 V RELAY FOR ON/OFF, RUN FEED BACK (MPCB-1.4-2.3A +CONTACTOR-9A)	0.45
27	VIBRATING TUBE PS-3-B	DOL (AUTO-OFF-MANUALSWITCH)	0.45

AmulFed Dairy

A UNIT OF GUJARAT CO-OPERATIVE MILK MARKETING FEDERATION LIMITED

(Previously Known as Mother Dairy, Gandhinagar)

		ON-OFF PB WITH INDICATION/TRIP 24 V RELAY FOR ON/OFF, RUN FEED BACK (MPCB-1.4-2.3A +CONTACTOR-9A)	
28	SHIFTER DUMPING -1	DOL (AUTO-OFF-MANUALSWITCH) ON-OFF PB WITH INDICATION/TRIP 24 V RELAY FOR ON/OFF, RUN FEED BACK (MPCB-2-3.3A +CONTACTOR-9A)	1.5
29	SHIFTER DUMPING -2	DOL (AUTO-OFF-MANUALSWITCH) ON-OFF PB WITH INDICATION/TRIP 24 V RELAY FOR ON/OFF, RUN FEED BACK (MPCB-2-3.3A +CONTACTOR-9A)	1.5
30	FIRE BOOSTER PUMP	DOL (AUTO-OFF-MANUALSWITCH) ON-OFF PB WITH INDICATION/TRIP 24 V RELAY FOR ON/OFF, RUN FEED BACK (MPCB-6-10A +CONTACTOR-20A)	5.5
31	FIRE WATER PUMP	DOL (AUTO-OFF-MANUALSWITCH) ON-OFF PB WITH INDICATION/TRIP 24 V RELAY FOR ON/OFF, RUN FEED BACK (MPCB-14-20A +CONTACTOR-32A)	9.3
32	DOL-1	DOL (AUTO-OFF-MANUALSWITCH) ON-OFF PB WITH INDICATION/TRIP 24 V RELAY FOR ON/OFF, RUN FEED BACK (MPCB-2-3.3A +CONTACTOR-9A)	1.5
33	DOL-2	DOL (AUTO-OFF-MANUALSWITCH)	1.5

AmulFed Dairy

A UNIT OF GUJARAT CO-OPERATIVE MILK MARKETING FEDERATION LIMITED

(Previously Known as Mother Dairy, Gandhinagar)

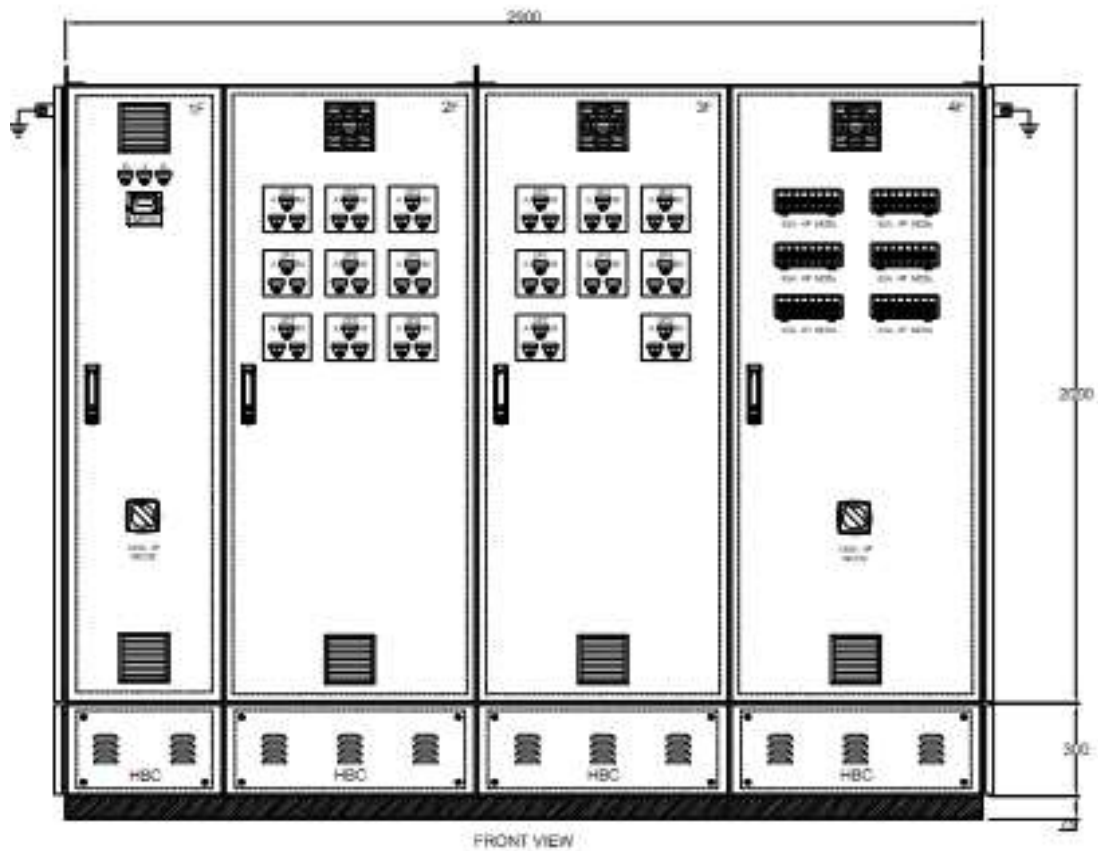
		ON-OFF PB WITH INDICATION/TRIP 24 V RELAY FOR ON/OFF, RUN FEED BACK (MPCB-2-3.3A +CONTACTOR-9A)	
34	DOL-3	DOL (AUTO-OFF-MANUALSWITCH) ON-OFF PB WITH INDICATION/TRIP 24 V RELAY FOR ON/OFF, RUN FEED BACK (MPCB-1.4-2.3A +CONTACTOR-9A)	0.45
35	DOL-4	DOL (AUTO-OFF-MANUALSWITCH) ON-OFF PB WITH INDICATION/TRIP 24 V RELAY FOR ON/OFF, RUN FEED BACK (MPCB-1.4-2.3A +CONTACTOR-9A)	0.45
36	DOL-5	DOL (AUTO-OFF-MANUALSWITCH) ON-OFF PB WITH INDICATION/TRIP 24 V RELAY FOR ON/OFF, RUN FEED BACK (MPCB-6-12A+CONTACTOR-16A)	4 KW
37	DOOR CLOSER	DP-ELCB-30mA	25A
38	AIR CURTAIN	DP-MCB	25A
39	EXHAUST FAN-1	TPN-MCB	32A
40	EXHAUST FAN-2	TPN-MCB	32A
41	POINT-1	TPN-MCB	32A

AmulFed Dairy

A UNIT OF GUJARAT CO-OPERATIVE MILK MARKETING FEDERATION LIMITED

(Previously Known as Mother Dairy, Gandhinagar)

APPROX. DESIGN ARRANGEMENT WITH DIMENSION-OLP POWDER PLANT MCC



B) NON-COMPARTMENT- MCC FOR GHEE PLANT:

Sr. No.	Description	Type	Rating
1	Incomer	MCCB -Four Pole ,50 kA with ROM with MP based OC, SC & EF protection released with RS485 multi-function meter. R/Y/B/ON/OFF/TRIP INDICATION	400A
2	15KG-TIN FILLING	TPN-MCB	63A
3	DRUM FILLING LINE	TPN-MCB	63A
4	500ML TETRA PRINTER	TPN-MCB	63A
5	500ML CONVEYOR	TPN-MCB	63A
6	DRUM M/C-1	TPN-MCB	63A
7	DRUM M/C-2	TPN-MCB	63A
8	CON-1	SP-MCB	20A
9	CON-2	SP-MCB	20A
10	CON-3	SP-MCB	20A
11	BUTTER OIL TRANSFER PUMP	DOL (AUTO-OFF-MANUAL SWITCH) ON-OFF PB WITH INDICATION/TRIP 24 V RELAY FOR ON/OFF, RUN FEED BACK (MPCB-6-10A +CONTACTOR-20 A)	5.5 KW
12	PUMP 5LTR	DOL (AUTO-OFF-MANUAL SWITCH) ON-OFF PB WITH INDICATION/TRIP 24 V RELAY FOR ON/OFF, RUN FEED BACK (MPCB-4-8A +CONTACTOR-16A)	2.2 KW
13	PUMP 15 KG	DOL (AUTO-OFF-MANUAL SWITCH) ON-OFF PB WITH INDICATION/TRIP 24 V RELAY FOR ON/OFF, RUN FEED BACK (MPCB-4-8A +CONTACTOR-16A)	2.2 KW
14	SPARE PUMP-1	DOL (AUTO-OFF-MANUAL SWITCH) ON-OFF PB WITH INDICATION/TRIP 24 V RELAY FOR ON/OFF, RUN FEED BACK (MPCB-6-10A +CONTACTOR-20 A)	5.5 KW
15	SPARE PUMP-2	DOL (AUTO-OFF-MANUAL SWITCH) ON-OFF PB WITH INDICATION/TRIP 24 V RELAY FOR ON/OFF, RUN FEED BACK (MPCB-4-8A +CONTACTOR-16A)	2.2 KW
16	SPARE PUMP-3	DOL (AUTO-OFF-MANUAL SWITCH) ON-OFF PB WITH INDICATION/TRIP 24 V RELAY FOR ON/OFF, RUN FEED BACK (MPCB-6-10A +CONTACTOR-20 A)	5.5 KW
17	GHEE-1	TPN-MCB	63A
18	GHEE-2	TPN-MCB	63A
19	GHEE-3	TPN-MCB	63A

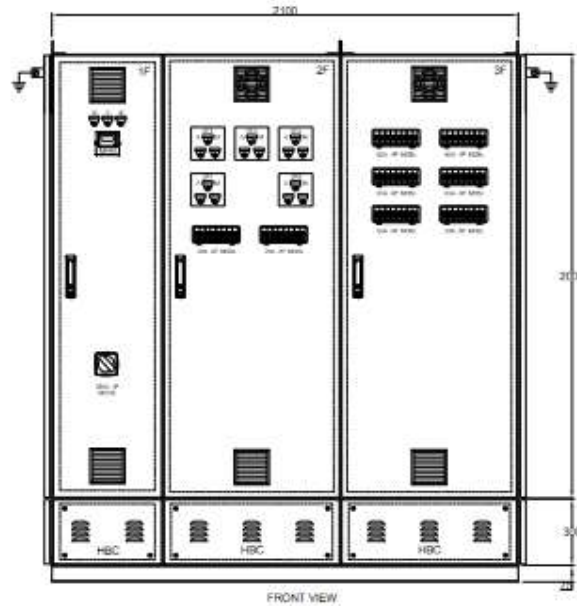
AmulFed Dairy

A UNIT OF GUJARAT CO-OPERATIVE MILK MARKETING FEDERATION LIMITED

(Previously Known as Mother Dairy, Gandhinagar)

20	GHEE0-4	TPN-MCB	32A
21	GHEE0-5	TPN-MCB	32A
22	GHEE0-6	TPN-MCB	32A
23	MCB-1	SP-MCB	16A
24	MCB-2	SP-MCB	16A
25	MCB-3	SP-MCB	16A

APPROX. DESIGN ARRANGEMENT WITH DIMENSION-GHEE PLANT MCC



AmulFed Dairy

A UNIT OF GUJARAT CO-OPERATIVE MILK MARKETING FEDERATION LIMITED

(Previously Known as Mother Dairy, Gandhinagar)

MAKE LIST:

MCCB/MCB/MPCB/CONTACTOR/ REPLAY	LK-L&T/SCHNEIDER/SIEMENS PLA/OMRON
LED PUSH BUTTON WITH INDICATION	TEKNIC/ LK- L&T/SCHNEIDER/SIEMENS
MULTI FUNCTION METER/DIGITAL AMETER/DIGITAL VOLT METER	LK L&T/SCHNEIDER/ SIEMENS/CONSERVE
POWER-CONTROL CONNECTOR	ELMAX/CONNECTWELL
WIRE-FRLS	RR/KEI/POLYCAB/HAVELLS
AURO/MANUAL SELECTROR SWITCH	SALZER/ LK-L&T/ SCHNEIDER/SIEMENS
EPOXY RESIN CURRENT TRNSFORMER	RISHABH/ASHMOR/VIRAT



(Previously Known as Mother Dairy, Gandhinagar)

GENERAL REQUIRMENTS:

- BIDDER HAS VALID ELECTRICAL CONTRACTOR LICNCE.
- BIDDER HAS CPRI APPROVAL FOR PANEL.
- BIDDER HAS TO VISIT THE LOCATION AND AREA FOR NEW PANEL INSTALLATION AND OLD PANEL REMOVING WORK.
- PANEL SHOULD BE NON-COMPARTMENTAL TYPE.
- PANEL MATERIAL SHOULD BE MS-CRCA POWDER COATING DOOR/PARTITIONS/MOUNTING PLATE/GLAND PLATE-2 MM, WITH SIEMENS GREY-7032 COLOUR
- CONTROL WIRE-FRLS-1.5MM² COPPER,1.1 KV FOR INDICATION CKT,2.5MM² FOR CT/PT,4 MM² FOR EARTHING.
- CT SHOULD BE EPOXY RESIN TYPE.
- MAIN BUSBAR -ALUMINIUM WITH CURRENT DENSITY 0.8 A/M²
- COPPER POWER CABLE AS PER LOAD REQUIREMENT.
- DEGREE PROTECTION IP - 55 (IS/IEC 61439-2: 2011) WITH PU GASKET AND HEAVY-DUTY DOOR LOCKS FOR ALL DOORS.
- HARDWARE ZINC PASSIVATED (GOLDEN & SILVER PLATED) CORROSION RESISTANCE.
- FERRULES COMPUTERIZED PRINTED ON WHITE SLEEVE AT BOTH END OF CONTROL & POWER CKT.
- CABLE ENTRY INCOMING TOP SIDE, OUT GOING TOP SIDE.
- FAULT LEVEL 50kA. RMS FOR 01 SEC. (IS 8623 - PART 1 - 1993)
- BUSBAR COMPARTMENT-FORM OF SEPERATION FORM3B - TYPE 2
- CLEARANCES- SPACING BETWEEN PHASE-TO-PHASE MIN. 30 M.M., PHASE TO EARTH & NEUTRAL MIN. 25 M.M.
- CREEPAGE MIN. CREEPAGE DIDMANCE 150 MM.
- SYSTEM VOLTAGE 3 PHASE - 4 WIRE, 415V/ AC. PHASE TO PHASE & 230V/ AC. PHASE TO NEUTRAL. 50Hz.
- NAME PLATE & LABELING SELF ADHESIVE, LASER ENGRAVED WITH BLACK BACKGROUND & WHITE LETTERS.
- 300 MM HEIGHT STAND REQUIRED FOR GHEE MCC.

AmulFed Dairy

A UNIT OF GUJARAT CO-OPERATIVE MILK MARKETING FEDERATION LIMITED

(Previously Known as Mother Dairy, Gandhinagar)

BUY BACK (WITHOUT CIRCUIT BREAKER) OF OLD PANEL AS PER BELOW PHOTOS AND SIZE:

1) EXISTING PANEL-A

DOUBLE SIZE MCC PANEL

APPROX SIZE: 5.3 M LENGTH,.0.900M WIDTH, 2.4 M HEIGHT

FRONT SIDE



AmulFed Dairy

A UNIT OF GUJARAT CO-OPERATIVE MILK MARKETING FEDERATION LIMITED

(Previously Known as Mother Dairy, Gandhinagar)

BACK SIDE



AmulFed Dairy

A UNIT OF GUJARAT CO-OPERATIVE MILK MARKETING FEDERATION LIMITED

(Previously Known as Mother Dairy, Gandhinagar)

SCOPE:

SR NO.	DISCRIPTION	PRICE BREAK UP		
		SUPPLY-RS.	INSTALLATION-RS.	BUY BACK-RS.
1	SUPPLY NON-COMPARTMENT- MCC FOR OLD POWDER PACKING PLANT AS PER SPECIFICATION AND DETAILS.:		NA	NA
2	SUPPLY NON-COMPARTMENT- MCC FOR GHEE PLANT AS PER SPECIFICATION AND DETAILS.		NA	NA
3	LOADING, UNLOADING, POSITIONING, INSTALLATION, TESTING AND COMISSIONING OF NON-COMPARTMENT-MCC FOR OLD POWDER PACKING PLANT INCLUDING OF CONNECTION OF EXISITING CABLING WORK.	NA		NA
4	LOADING, UNLOADING, POSITIONING, INSTALLATION, TESTING AND COMISSIONING OF NON-COMPARTMENT-MCC FOR GHEE PLANT INCLUDING CONNECTION OF EXISITING CABLING WORK.	NA		NA
5	REMOVING OF EXISITING OLD POWDER PLANT MCC WITH POWER AND	NA		NA

AmulFed Dairy

A UNIT OF GUJARAT CO-OPERATIVE MILK MARKETING FEDERATION LIMITED

(Previously Known as Mother Dairy, Gandhinagar)

	CONTROL CABLING (PHOTO ATTACHED)			
6	BUYBACK OF EXISTING PANEL-A (AS PER ATTACHED PHOTOS)	NA	NA	

Rates must be inclusive of installation & commissioning.

FOR Dairy stores. Inclusive all.

AmulFed Dairy

A UNIT OF GUJARAT CO-OPERATIVE MILK MARKETING FEDERATION LIMITED

(Previously Known as Mother Dairy, Gandhinagar)
On Letter Head of Vendor / Customer.

To,
General Manager
AmulFed Dairy (A Unit of GCMF Ltd.)
Village:- Bhat,
Near Indira Bridge,
Gandhinagar-382 428

Dear Sir,

Sub : Fund Transfer Payments.

I/we request and authorise you to effect Fund Transfer Payment to my / our Bank account as per the details given below (Please map our account in your SAP):

Vendor Name:- : _____
Vendor Code : _____
Bank Account Name : _____
Bank Account Number : _____
Branch Name & Address of Bank: _____

Email Id : _____
Permanent A/c Number (PAN) : _____
Name of the Auth signatory : _____
Contact Person : _____
Contact Number : _____
IFSC code : _____
MICR Code : _____
Type of Account : Savings / Current / Cash Credit

I, hereby declare that the particulars given above are correct. If the transaction is delayed or not effected at all for reasons of incomplete or incorrect information, I would not hold the user institution responsible. I hereby authorise Bank (as mentioned above) to credit my above mentioned account with the amount of instalment and I agree to discharge the responsibility expected of me as a participant under the scheme.

Date: _____

Signature of Account Holder (s)

- Mandatory fields -cannot be left blank.
 - Kindly attach a blank cancelled cheque with this mandate form.

Bankers Attestion -

CERTIFIED THAT THE PARTICULARS FURNISHED ABOVE ARE CORRECT AS PER OUR RECORDS.

BANK STAMP

DATE : _____

SIGNATUR E OF BANK OFFICIAL

Plot No. 35, Nr. Indira Bridge, Ahmedabad-Gandhinagar Highway, Village: Bhat, Dist.:Gandhinagar, PIN 382428
Tel. No. (+91-79) 23969055 – 58, Fax No. (+91-79) 23969059
Website: www.amul.com