



**Gujarat Cooperative Milk Marketing Federation Ltd, Anand  
AmulFed Dairy (Previously known as AmulFed Dairy)**

Plot No. 35, Nr. Indira Bridge,  
Ahmedabad-Gandhinagar Highway  
Village: Bhat, Dist: Gandhinagar  
Gujarat, India-382428

Request for Bid (RFB) for **“Purchase Inquiry for Supply, installation of Laboratory Furniture for  
New GC (NABL) Lab”**as per given scope of work.

AFD: PUR: ENQ: 2021: 486





## AMULFED DAIRY

( A Unit of Gujarat Co-operative Milk Marketing Limited )  
Plot No. 35, Near Indira Bridge, Ahmedabad-Gandhinagar Highway  
Village - Bhat, Dist - Gandhinagar - 382428  
Phone : +91-79-3969055/56 Fax : +91-79-3969059

We invite sealed bids from eligible bidders for the following works: "**Purchase Inquiry for Supply, installation of Laboratory Furniture for New GC (NABL) Lab**" as per the scope of supply mentioned in the Inquiry.

Bid Reference	AFD: PUR: ENQ: 2021: 486
Bid Start	Starts from 2.07.2021
Submission	Up to 02.00 pm of 16.07.2021
Completion period	3 months

### Eligibility Criteria

- 1) Bidder should be having minimum 10 numbers of successful installations of similar nature (Laboratory Furniture) working in India.
- 2) The Bidder/Supplier shall have turnover, in each of the last three years, at least Rs. 1 Cr and must have executed, in the last five years at least a contract of similar nature and of value not less Rs. 15 Lac

Technical Specification : As per the Annexure-I

### Submission of Bid :

Bidders fulfilling above eligibility criteria eligible for submission of bids in their name only.

- 1.1 The bid shall be submitted through hardcopy before above due date is acceptable.
- 1.2 The Price Break up sheet (in separate sealed Envelope) and technical document shall be submitted at the office address mentioned below.
- 1.3 The price Break up sheet should be entitled with reference of "Price Break Up for, **Purchase Inquiry for Supply, installation of Laboratory Furniture for New GC (NABL) Lab**".

### Rights Reserved by AmulFed Dairy (A unit of GCMMF Ltd).

AmulFed Dairy (A unit of GCMMF Ltd), at its sole discretion and without assigning any reason thereof, reserves the right to accept and / or reject the whole or part of any or all the bids received.

### Validity :

The offer should be valid for 6 Months from the date of Bid opening.

Contact details: For any techno-commercial query you may contact Palak Shah (7359001666), or (E-mail-palak.shah@amul.coop) of Purchase department.

## Technical Specification & Scope of Supply

Sr No	Item Description	Unit	Qty	Supply Unit Price in Rs.	Installation Unit Price in Rs.
1	Providing of G.I.Powder Coated moduler Clean Room Lab Furniture With 0.8mmThk. Powder Coated Finished Sheet With Black Granite Top				
A	F1 D2 S 750*825*750	Nos.	16		
B	F1 DLS 750*825*750	Nos.	16		
C	F1 DLS 600*825*750	Nos.	4		
D	F1 D1S 400*825*750	Nos.	6		
E	F S N S 750*825*750	Nos.	6		
F	F 45 COR 1000*825*1000	Nos.	7		
G	F S END 15*825*750	Nos.	16		
H	F1 D2S 900*825*750	Nos.	12		
I	F1 D1 S 500*825*750	Nos.	4		
2	Aluminium Powder Coated Electric Race Way	Mtr.	100		
3	Electric Point Single Phase 16A with wiring and all accessories (MCB and Socket) Approved Make: NORISYS MAKE	Nos.	150		
4	S S Sink	Nos.	6		
5	Bench Fittings With 3 Valve Swan Make	Nos.	6		
6	Eye Wash (Drench Hose Unit /Mounted)	Nos.	2		
7	S S PEG Board With 24 Pegs And Tray (600mm*600mm*15mm)	Nos.	8		
9	P&S Wooden Office Table For Cabin Made Out of 18mm,6,ISI Commercial Plywood, with Internal Side Finished 0.8mm Laminate and Outside 1mm Laminate Finish ,OVC Edge Bending With Required all Fittings and Metal Powder Coated leg.	Nos.	2		
10	P&S Wooden Rack (Do as Above Specification)	Nos.	2		
11	P&S Wooden Conference Table (2400*1050*825)	Nos.	1		

**\*Rates should be on FOR AFD Basis inclusive of Freight and Insurance.**

**\*Supply and Installation rates should be offered separately**

**\*Final BOQ to be consider as per the attached drawing**

Technical Specifications:

1. Hinges: - S.S. 304 Butt Hinges Hafele Make with positive catch arrangement.
2. Lock :- Hettich Make.
3. Drawer Telescopic channel :- Hafale/Hettich/Godrej make.
4. Handle: Aluminium construction Flush type handle with Anodizing finish.
5. Electrical Cable: Polycab or Equivalent

### **Payment term for the Inquiry:**

Payment for supply, installation and commissioning contracts must be strictly as below:

- 1) 20% advance of total contract value (Supply + Erection & Commissioning) on submission of following:
  - (i) Acceptance of the order i.e.
    - a. Submission of the Duplicate copy of the order duly signed by the authorised signatory putting stamp of the Organisation.
    - b. Against a bank guarantee for equivalent amount valid for 60 days beyond the stipulated delivery (as per schedule of delivery/supply)/ completion period.
- 2) Payment against Supply and erection of equipments/material:
  - a. 65% progressive payment of supply value against safe receipt of goods at site.
  - b. 65 % payable on erection value on progression of erection within 30 days.
- 3) 15% balance payment within 30 days of satisfactory commissioning of the Tanks. On submission of:
  1. The Performance Security shall be in the amount of 15% of the Contract price up to sixty days after the date of completion of performance obligations including warranty obligations.

**Notes:** a) Payment shall be made on complete supply of an item/group of items specified in the contract. No payment specified in the contract. No payment shall be made if supply of an item/group of items is incomplete.

b) For all the payments to be made against bank guarantees, The Bank Guarantees should be obtained from Nationalized Bank or ICICI Bank, HDFC Bank, IDBI Bank, Kotak Mahindra Bank or acceptable Bank by AFD.

### **Liquidated Damages**

Bidder/Supplier fails to deliver any or all of the Goods or perform the Services within the time period(s) specified in the Contract, the Purchaser shall, without prejudice to its other remedies under the Contract, deduct from the Contract Price, as liquidated damages as under:

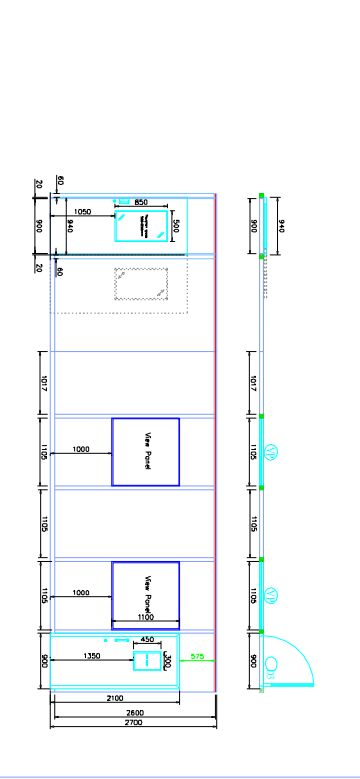
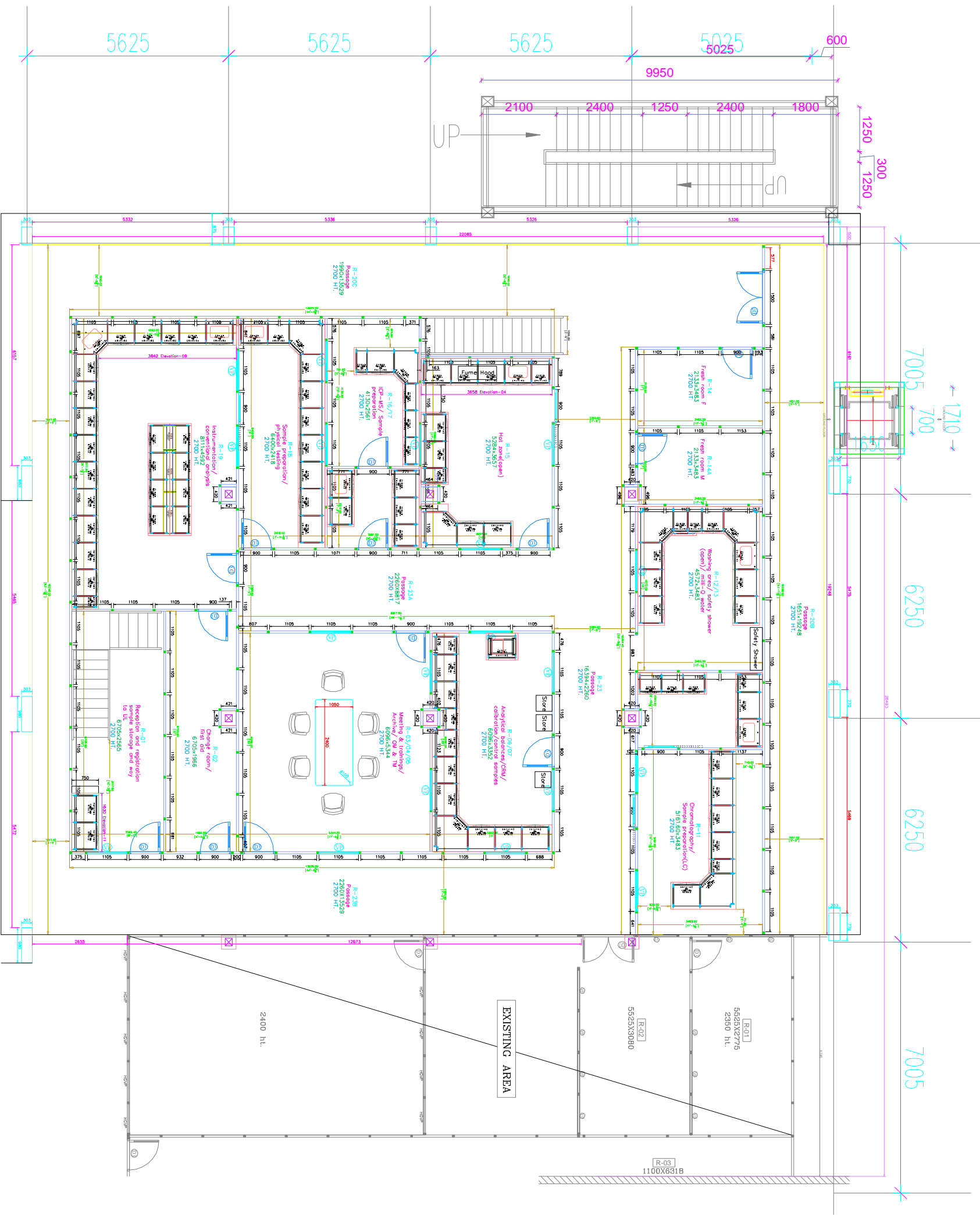
#### **a. For the Supply Component:**

A sum equivalent to 0.5% of the delivered price of the delayed goods (As per the price break up furnished by the supplier and accepted by the Purchaser, which the supplier fails to supply within the time period specified in the contract for each week of delay.

#### **b. For the Erection and Commissioning Component:**

A sum equivalent to 0.5% of the un – executed portion of each week of delay or part thereof beyond the time specified in the contract for the successful completion of the plant.

The total amount so deducted as per above, shall not exceed 5% of the Contract value. Once the maximum is reached, the Purchaser may consider termination of the Contract.



Lower level  
 GCMMF  
 QC-Laboratory  
 Gandhinagar

## **QUALIFICATION APPLICATION**

### **Qualification Application Form**

You must submit this form (Table 2 and 3), duly filled in, along with the supporting as per following checklist given in Table 1:

<b>Table 1 Checklist for Supportings</b>	
<b><i>Supportings Required</i></b>	<b><i>Please (√)</i></b>
Latest Balance sheet filed with (Name of Authority) on (Date)	
Latest Profit & Loss Statement <b>from</b> (date) <b>to</b> (date) filed with (Name of Authority) on (date).	
Audited copies <sup>1</sup> of annual accounts and P & L account of <b>past 3 years</b>	
Certificate of Financial Soundness from Bankers of Bidder/Suppliers	
Income Tax Clearance Certificate (Latest)	
Sales Tax Clearance Certificate (Latest)	
Details of Income Tax Registration	
Details of Sales Tax Registration	
Organization Chart	
Annual Report of last three years	

---

<sup>1</sup> Indigenous Bidder/Suppliers must attach copy of accounts audited under section **44 AB of Income Tax Act**. In case the accounts need not be audited, a Chartered Accountant or Manager of a Nationalized Bank should attest the information in this statement.

**Table 2  
Financial Soundness**

<b>General Information</b>			
<b>Name</b>			
<b>Address</b>			
<b>Phones</b>			
<b>Mobile</b>			
<b>Fax</b>			
<b>E-mail</b>			
<b>Contact Personnel with designation</b>			
<b>Financial Information</b>			
<b>S N</b>	<b>Description</b>	<b>Value (Rs)</b>	
1	<b>Cash Balance</b>	In Bank	
		In Hand	
		Total	
2	<b>Fixed Assets</b>	Gross	
		Net	
3	<b>Current Assets</b>	Inventories	
		Others	
		Total	
4	<b>Current liabilities</b>	Bank Cash Credit	
		Sundry creditors	
		Others	
		Provisions	
		Contingent Liabilities (including claims not acknowledged, please specify)	
		Total	
5	<b>Capital</b>	Share capital	
		Free reserves	
		Other reserves (please specify)	
6	Term loans from financial institutions and banks		
7	Working capital		
8	Net worth		



9	Debtors and advances considered good	More than 6 months	
		Less than 6 months	

<b>Significant Financial Ratios</b>			
<b>SN</b>	<b>Ratio</b>	<b>Definition</b>	<b>Value</b>
1	Current	Current Assets to Current Liabilities	
2	Acid Test	(Cash + temporary investment held in lieu of cash + current receivable) / current liabilities	
3	Solvency	Total Liability to Net Worth	
<b>Net Profit before Tax</b>			
<b>SN</b>	<b>Period</b>		<b>Value</b>
1	Current period		
2	During the last Financial Year		
3	During the year before last Financial Year		
<b>Financial Arrangements</b>			
<b>SN</b>	<b>Resources</b>		<b>Amount</b>
1	Own		
2	Bank Credits		
3	Others (Specify)		
<b>Sales</b>			
<b>SN</b>	<b>Category of Customers</b>	<b>Value of orders to be executed/ anticipated Sales</b>	
		<b>Current</b>	<b>Next Financial Year</b>
1	Government Department		
2	Commercial		
3	Others		
	Total		
<b>Annual Turnover</b>			
<b>SN</b>	<b>Financial Year (Please begin with current year)</b>		<b>Turnover</b>
1			
2			
3			
4			
5			
6			

**Table 3  
Technical Competency**

<b>Classifications</b>		
<b>SN</b>	<b>Category</b>	<b>Please (√)</b>
1	Manufacturer	
2	Clearing & Forwarding Agent	
3	Stockist	
4	Wholesale Dealer	
5	Authorized Reseller	
6	Authorized Service Agent	
7	Retailer	
8	Trader	
9	Others (please specify)	
<b>Details on Plant</b>		
<b>SN</b>	<b>Plant</b>	<b>Details</b>
1	Location	
2	Description	
3	Type	
4	Size of building	
5	Is property on lease or free hold?	
6	If on lease, indicate date of expiry of lease in each case.	
7	Others (please specify)	

<b>Plant Facilities</b>					
<b>SN</b>	<b>Facilities</b>		<b>Ans</b>	<b>Remark</b>	
1	Space available for manufacturing (in m2)				
2	Space available for storage (in m2)				
3	Space available for inspection (in m2)				
4	Are buildings fire resistant? (Y/N)				
5	Are premises approved by Municipal fire Department? (Y/N)				
6	Are buildings under Municipal fire protection?				
7	Are power & fuel supply adequate to meet production requirements? (Y/N)				
8	Are adequate transportation facilities available? (Y/N)				
9	Are safety measures adequate for performance of proposed contract? (Y/N)				
10	Is adequate material handling equipment available? (Y/N)				
<b>Testing Facilities</b>					
<b>SN</b>	<b>Facilities</b>		<b>Details</b>		
1	List testing equipment available				
2	Give details of tests to be carried out on items offered.				
3	Details of the testing organizations available.				
<b>Quality Control Organization</b>					
<b>SN</b>	<b>Quality Control Method</b>		<b>Response</b>		
1	Are goods offered subject to Batch Test, Random Sampling or full 100% test for				
2	Are tests carried out by factory employees or by a separate testing				
3	Are independent Quality Control Organization checks made and				
<b>Manufacturing Capacity</b>					
<b>SN</b>	<b>Description of Equipment</b>	<b>Capacity</b>	<b>Units Manufactured</b>		
			<b>Current year</b>	<b>Last Year</b>	<b>2nd last year</b>
1					

2					
<b>Personnel/ Organization</b>					
<b>SN</b>	<b>Personnel in</b>	<b>Numbers in levels</b>			
		<b>Managerial</b>	<b>Supervisory</b>	<b>Skilled Workmen</b>	
1	Production				
2	Marketing				
3	Installation and commissioning				
4	Service				
5	Spare parts				
6	Administrative				
<b>Service Center nearest to our site location</b>					
<b>Location</b>					
<b>Phone no</b>					
<b>SN</b>	<b>Information required on</b>		<b>Details</b>		
1	Number of skilled employees				
2	Number of unskilled employees				
3	Number of engineering employees				
4	Number of administrative employees				
5	List of special repair/ workshop facility available				
6	The storage space available for spare parts (in m2)				
7	Value of minimum stock of spares available at all the service centres in respective currency				
8	List of the models/ types of equipment serviced by the Centre in last 2 years				

<b>References<sup>2</sup></b>						
<b>SN</b>	<b>Name of Organization</b>	<b>Address, Telephone, Fax, Contact Person</b>				
1						
2						
<b>List of components usually subcontracted</b>						
1						
2						
<b>Workload for the current and forth coming financial year on quarterly basis</b>						
<b>SN</b>	<b>Financial Year</b>	<b>Quarterly Workload as % of Total Capacity</b>				
		<b>I</b>	<b>II</b>	<b>III</b>	<b>IV</b>	
1	Current Financial Year					
2	Next Financial Year					
<b>List of major projects of similar size and nature previously executed</b>						
<b>S N</b>	<b>Name of the client</b>	<b>Project</b>	<b>Year of award</b>	<b>Year of completion</b>	<b>Capacity/ Products</b>	<b>Value (Curren cy)</b>
1						
2						
3						
4						
<b>Type of equipment manufactured and supplied (M &amp; S) during last 2 years</b>						
<b>SN</b>	<b>Equipment</b>	<b>Capacity</b>	<b>Qty</b>	<b>Projects</b>	<b>On Hand Order Qty</b>	
1						
2						
3						
4						
<b>Type of equipment manufactured, supplied, installed and commissioned (MSIC)</b>						
<b>SN</b>	<b>Equipment</b>	<b>Capacity</b>	<b>Qty</b>	<b>Projects</b>	<b>On Hand Order Qty</b>	
1						
2						
3						
4						

<sup>2</sup> Names of two buyers to whom similar equipment are supplied, installed and commissioned in the past and to whom reference may be made by the AmulFed Dairy, Gandhinagar regarding the Bidder/Supplier's technical and delivery ability:

<b>Schedules for furnishing technical data and certified drawings after receipt of orders</b>	
1	
2	
<b>Number of weeks required for preparing a bid proposal</b>	