



**Gujarat Cooperative Milk Marketing Federation Ltd, Anand  
AmulFed Dairy (Previously known as AmulFed Dairy)**

Plot No. 35, Nr. Indira Bridge,  
Ahmedabad-Gandhinagar Highway  
Village: Bhat, Dist: Gandhinagar  
Gujarat, India-382428

Request for Bid (RFB) for "**Design, Supply (FOR site basis including unloading), Installation, Testing & Commissioning of Injection Molding Machines for Chocolate/Ice Cream Tub and Lid at PFP**" as per given scope of work.

AFD: PUR: ENQ: 2020:152





## AMULFED DAIRY

( A Unit of Gujarat Co-operative Milk Marketing Limited )  
Plot No. 35, Near Indira Bridge, Ahmedabad-Gandhinagar Highway  
Village - Bhat, Dist - Gandhinagar - 382428  
Phone : +91-79-3969055/56 Fax : +91-79-3969059

We invite sealed bids from eligible bidders for the following works: **“Design, Supply (FOR site basis including unloading), Installation, Testing & Commissioning of Injection Molding Machines for Chocolate/Ice Cream Tub and Lid at PFP”** as per the scope of supply mentioned in the Inquiry”.

Bid Reference	AFD: PUR: ENO: 2020:152
Bid Start	Starts from 20.08.2020
Submission	Up to 02.00 pm of 17.09.202
Completion period	4 months

### Eligibility Criteria

- 1) Bidder should be having minimum 2 number of successful installations of similar nature (injection moulding machine) working in India.
- 2) The Bidder/Supplier shall have turnover, in each of the last three years, at least **Rs. 50 crore** and must have executed, in the last three years at least one contract of similar nature.

Technical Specification : As per the Annexure-I

### Submission of Bid :

Bidders fulfilling above eligibility criteria eligible for submission of bids in their name only.

- 1.1 The bid shall be submitted through hardcopy before above due date is acceptable.
- 1.2 The Price Break up sheet (in separate sealed Envelope) and technical document shall be submitted at the office address mentioned below.
- 1.3 The price Break up sheet should be entitled with reference of “Price Break Up for, **“Design, Supply, Installation and commissioning and Validation of Injection Molding Machines for Chocolate/Ice Cream Tub and Lid at PFP”**”.

### Rights Reserved by AmulFed Dairy (A unit of GCMMF Ltd).

AmulFed Dairy (A unit of GCMMLtd), at its sole discretion and without assigning any reason thereof, reserves the right to accept and / or reject the whole or part of any or all the bids received.

### Validity :

The offer should be valid for 6 Months from the date of Bid opening.

Contact details: For any techno-commercial query you may contact Palak Shah (7359001666), or (E-mail-palak.shah@amul.coop ) of Purchase department.

## **Annexure-I**

### **Injection Moulding Machines for Chocolate/Ice Cream Tub & Lid**

#### **Scope:**

Injection moulding machine with complete in mould labelling turnkey system including high speed mold and IML robot automation and stacking and packing for tub and lid (as per attached container drawing).

- One for Tub Making Suitable Capacity inj. Molding machine with IML and
- One for Lid Making Suitable Capacity Injection Molding machine with IML
  
- Min. Output requirement for Tub & Lid: 45000 tubs/day including label application to Tub/Lid with IML Robotic system

Turnkey System should include all necessary peripherals equipments including resin loader, dehumidifier, chillers, compressor, Granule conveying, Master Batch Dosing System etc required for machine operation.

Supplier has to provide tentative utility requirement for the machine, GA Drawing with bid.

#### **Following scope of supply for the Tub and Lid Machine:**

- Injection molding machine for Tub Making: 01 no
- One Mold with necessary safety system for Tub Making
- One Resin vacuum conveyer with moisture removal system
- One Resin Master Batch Vacuum conveyer
- One Resin + MB Mixture on Extruder with metal detector
- Necessary Plastic part collector, cooler, counter and conveyer
- One Dehumidifier
- One Packaged type Mold Chiller unit with necessary piping
- Touch Operator panel
- Electric Panel and necessary Electrical installation for Extruder, Mold Heating, Conveyer, chiller, Resin Loader, dehumidifier etc.
- Safety system, Necessary safety equipments, Safety Locks, Remote access, Remote Diagnostic
- Production and Process reporting, Recipe Management system
- Training @ one week/ 8 hrs a day, to Purchasers engineer 4 people, on machine operation, Trouble shooting, maintenance, Safety
  
- Above same scope for Lid making machine: 01 no

Drawing for the Tub & Lid: As below

Conveyer, counter & Automatic Box Shifter should be integral part of the Machine: Box Size: Should be as per below.

Scope should include 5 years necessary machine preventive maintenance requirements, including technical person visit, remote assistance and spares.

**Warranty should be Minimum-5 Years for machine and Mould**

**Spares for 5 years of smooth operation to provide for Inj. Machine, Mold & peripherals**

Tool Box, Special Tool, N2 Cylinder set to supply along with machine

Supply, Installation, Commissioning and validation to be consider in the scope of supply.

Travel Expense, lodging Boarding, local transfers of Engineers till validation will be supplier's scope

Machine should comply to CE directive

**Machine Output Guarantee:** Supplier should give 5 years trouble free, out put guarantee for whole system including IML robotic and peripherals for given article. Mold should be imported and easy maintainable, Mold should be covered for min 5 years of guarantee. IML Robotic System should be suitable to pick and apply lable at max rated out put of Mold Cycle. **Machine performance will be evaluated for complete operation, including lable placement (Indian lable) and final output of Tub and Lead.**

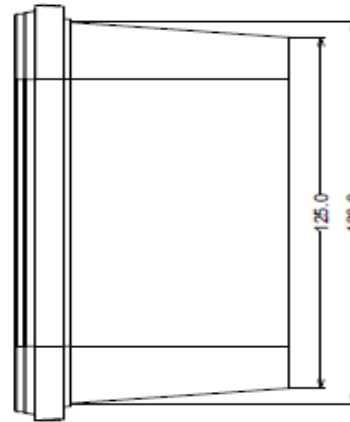
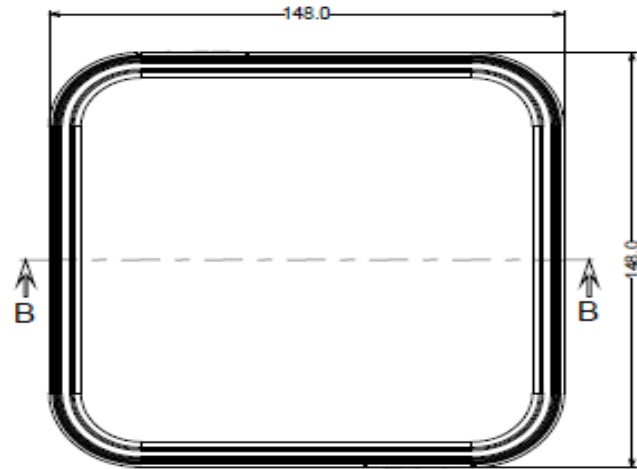
Preference will be given to supplier who offers energy efficient system/machine with maximum output guarantee.

**Specification of Chocomini Chocolate /Ice Cream Tub & Lid:**

Sr. No.	Particulars	Tub	Lid
1	Colour	White Opaque or Plain	White Opaque or Blue
2	OD at Top opening in mm *(L*B*H)	140x140	145 x 145 x 8
3	Max. OD in mm*(L*B*H)	148x148x78	
4	OD of neck (below the rib) in mm *(L x B)	136x136	
5	OD at bottom (L *B) in mm	125x125	
6	Material	PPCP	PPCP
7	Wt in Gms.	40.00+/-1 gm	19.0+/- 1 gm
8	Total Wt in Gms.	59 +/- 2 gm	
9	Volume (ml) *	Brim-full: 1000, Overflow: 1270	
10	Printing	With IML as per our approved design	
11	Packing	27 pcs of Tub with lid nested in each other & packed in a poly liner ensuring each piece free from dust/dirt. 12 such Bags ( <b>TOTAL 324 Pcs</b> ) in a new min 5 ply CBX.	
12	Special Requirement	Container and lid should withstand Frozen condition upto -35oC. It should not break at different temps and during transportation.	
* Dimensional Tolerance : +/- 1mm & Volume Tolerance : +/- 5 ml.			

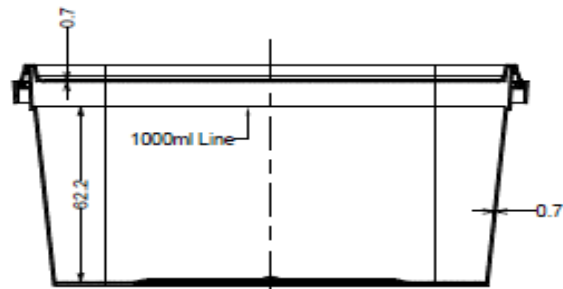
**Tub Drawing:**

ALL DIMENSIONS ARE IN mm  
DRAWING NOT TO SCALE



**NOTE:**  
 Material = PP  
 Container Wt. = 39 gm  
 Lid Weight = 19 gm  
 Overflow Vol = 1270 ml

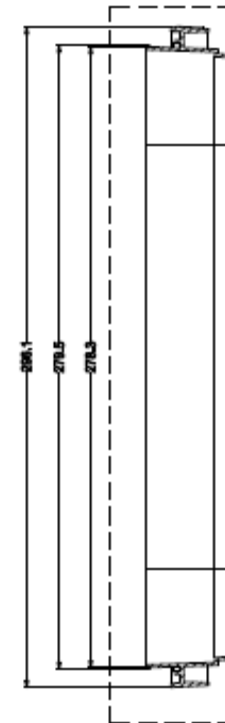
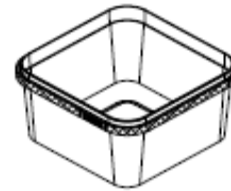
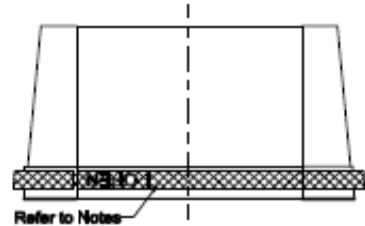
**Wall Thickness:**  
 Container = 0.7mm  
 Lid = 0.7mm



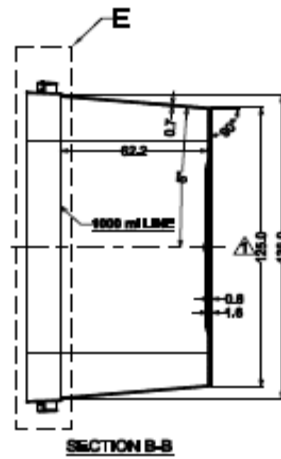
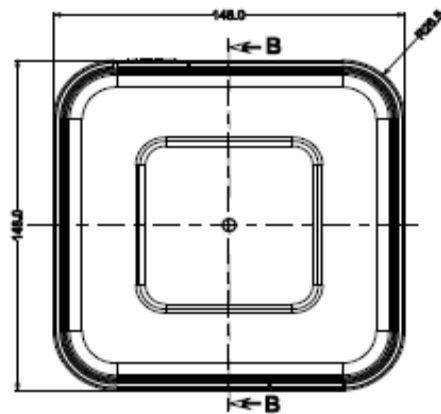
**SECTION B-B**

PART NO.	DESCRIPTION	QUANTITY	MATERIAL	SIZE	WEIGHT	HEAT TREATMENT	REMARKS
--	AMUL 1L Sq. Assembly	--	PP	--	--	--	--
DESIGNED BY	Rajesh	25-04-15	REV. NO.	SYMBOL	DESCRIPTION	DRAWN BY	DATE
CHECKED BY			01				
APPROVED BY			02				
TITLE						DRAWING NO.- -	
ASSEMBLY						MOLD NO.- -	

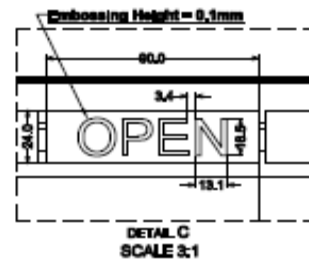
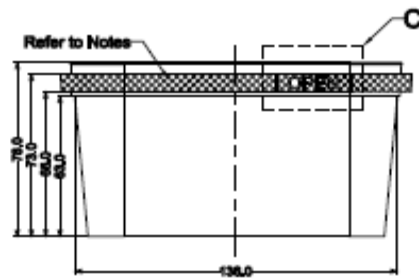
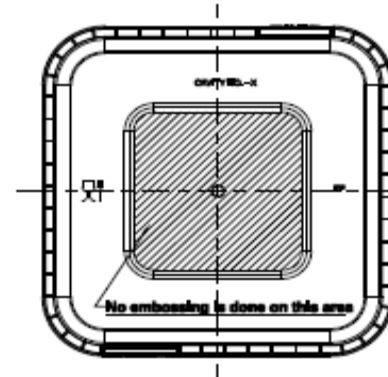
ALL DIMENSIONS ARE IN mm  
DRAWING NOT TO SCALE



DETAIL E  
SCALE 2:1



SECTION B-B



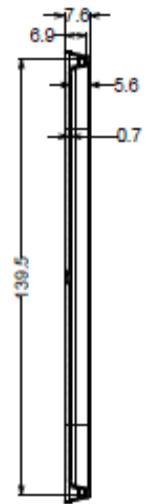
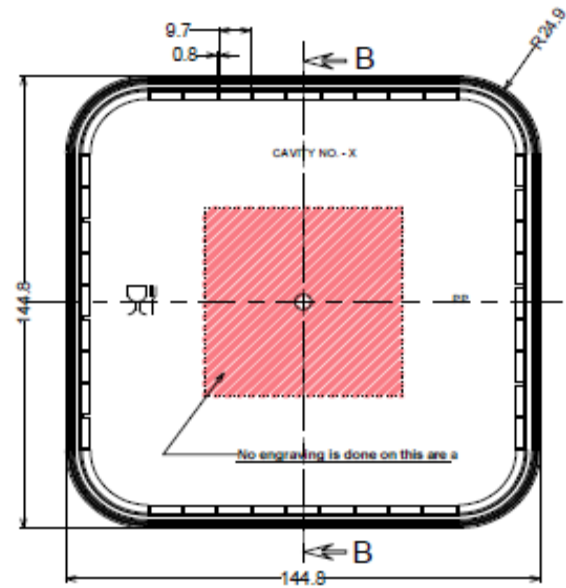
DETAIL C  
SCALE 3:1

NOTES:

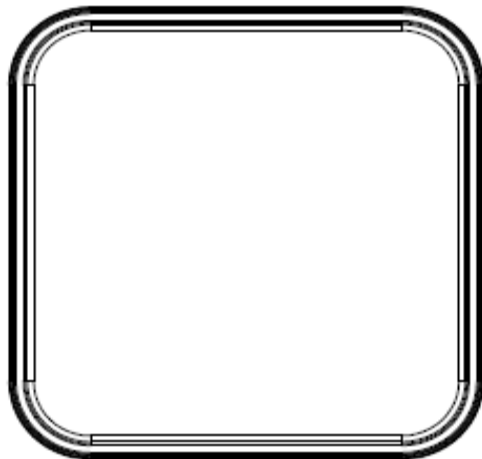
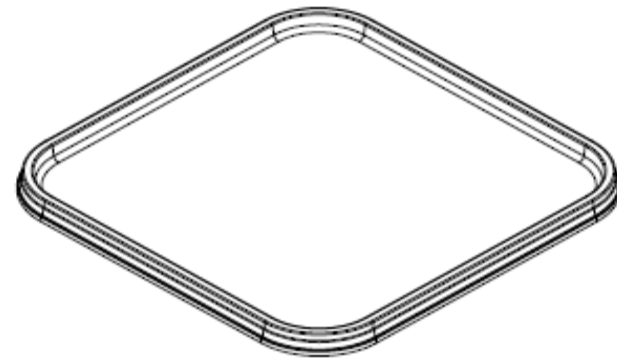
- 1)  = Matt Finish Surface

AMUL 1L Sq. CONTAINER	PP	39 gm					
PART NO.	DESCRIPTION	QUANTITY	MATERIAL	SIZE	WEIGHT	HEAT TREATMENT	REMARKS
SCALE	N/S						
DRAWN BY	Rajesh	25-04-15	REL. NO.	SYMBOL	DESCRIPTION	DRAWN BY	DATE
DESIGNED BY			01	△	Before 3D's Generation added	Rajesh	19-05-15
CHECKED BY			02				
APPROVED BY			03				
TITLE					DRAWING NO.- -		
CONTAINER					MOLD NO.- -		

ALL DIMENSIONS ARE IN mm  
DRAWING NOT TO SCALE



SECTION B-B



PART NO.	DESCRIPTION	QUANTITY	MATERIAL	SIZE	WEIGHT	HEAT TREATMENT	REMARKS
--	AMUL 1L Sq. LID	--	PP	--	16 gm	--	--
DRAWN BY	Rajeev	25-04-15		REV. NO.	SYMBOL	DESCRIPTION	DRAWN BY
DESIGNED BY				01			
CHECKED BY				02			
APPROVED BY				03			
TITLE						DRAWING NO.- --	
LID						MOLD NO.- --	



**Additional Scope : To be quote separately**

**All the bidders have to submit optional cost for Mold for the 200g PP Tub & Lid considering same injection machine + IML system can be used as per the below specification:**

<b>PARTICULARS</b>	<b>TUB</b>	<b>LID</b>
WEIGHT/Pc	8.5 ± 0.5gms	5.5 ± 0.5 gms
MATERIAL	PP B 400MN / B 550MN of RIL or equivalent PP Grade	
VOLUME	235 ML	
COLOUR OF TUB / LID	White Opaque	White Opaque
DIMENSION	As per Engg. Drawing OR Sample	
PRINTING	In-Mold Labelled Container as per our Apvd. Design in 7 to 8 colour	
PACKING	Stacks of 40 tubs shall be put in a LDPE liner & duly sealed from the top and 38 such filled liners shall be packed in a sound fresh min 5-Ply corrugated box having B.S 8.5 & C.S 200. 100 nos. of lid should first be packed in a poly liner & sealed from the top and 28 such filled liners shall be packed in a sound fresh min 5-Ply corrugated box having B.S 10.0 & C.S 300 (Please do not use re-used Box). The packs shall be marked with the name of the supplier, item based material, net and gross weight, date of manufacturing, batch No. etc. and shall also be properly sealed with BOPP tape.	

**Annexure-IV**

<b>Price Schedule Form</b>		
<b>Summary Sheet</b>		
<b>SN</b>	<b>Summary Heads</b>	<b>Amount</b>
1	2	3
1	Total Ex-factory, Packed	
2	Transportation	
3	Insurance	
4	GST/Custom Duty	
5	Total Supply Price delivered at Site (1+2+3+4)	
6	Total Installation & Commissioning with GST	
7	Total Bid Price (5+6)	

Note:

1	Bid must be submitted strictly as per this pro forma (items break-up sheet shall be submitted in hard copy in sealed envelope at office address mentioned in IFB with marking of "DO Not Open Before").
2	Amount against Sr. No 1 to 3 & 7 must be the total worked out in items break-up sheet.
3	Please quote charges for transportation (Sr. no 4) and insurance (Sr. no 5) as a percent of ex-factory, packed (Sr. No 1).
4	List of Spares with unit prices, valid for one year, must be submitted.
5	All the bidders have to submit price considering EPCG/MEIS as well as considering Full custom duty. In all the cases all the responsibility till commissioning of the plant will remain of Bidder/Supplier.

**Signature of Authorized Signatory of Bidder/Supplier**

### **Payment term for the tender:**

Payment for supply, installation and commissioning contracts must be strictly as below:

- 1) 20% advance of total contract value (Supply + Erection & Commissioning) on submission of following:
  - (i) Acceptance of the order i.e.
    - a. Submission of the Duplicate copy of the order duly signed by the authorised signatory putting stamp of the Organisation.
    - b. Against a bank guarantee for equivalent amount valid for 60 days beyond the stipulated delivery (as per schedule of delivery/supply)/ completion period.
- 2) Payment against Supply and erection of equipments/material:
  - a. 65% progressive payment of supply value against safe receipt of goods at site.
  - b. 65 % payable on erection value on progression of erection within 30 days.
- 3) 15% balance payment within 30 days of satisfactory commissioning of the plant. On submission of:
  1. The Performance Security shall be in the amount of 15% of the Contract price up to sixty days after the date of completion of performance obligations including warranty obligations.

**Notes:** a) Payment shall be made on complete supply of an item/group of items specified in the contract. No payment specified in the contract. No payment shall be made if supply of an item/group of items is incomplete.

b) For all the payments to be made against bank guarantees, The Bank Guarantees should be obtained from Nationalized Bank or ICICI Bank, HDFC Bank, Yes Bank, IDBI Bank, Kotak Mahindra Bank or acceptable Bank by AFD.

### **Liquidated Damages**

Bidder/Supplier fails to deliver any or all of the Goods or perform the Services within the time period(s) specified in the Contract, the Purchaser shall, without prejudice to its other remedies under the Contract, deduct from the Contract Price, as liquidated damages as under:

#### **a. For the Supply Component:**

A sum equivalent to 0.5% of the delivered price of the delayed goods (As per the price break up furnished by the supplier and accepted by the Purchaser, which the supplier fails to supply within the time period specified in the contract for each week of delay.

#### **b. For the Erection and Commissioning Component:**

A sum equivalent to 0.5% of the un – executed portion of each week of delay or part thereof beyond the time specified in the contract for the successful completion of the plant.

The total amount so deducted as per above, shall not exceed 5% of the Contract value. Once the maximum is reached, the Purchaser may consider termination of the Contract.

## **QUALIFICATION APPLICATION**

### **Qualification Application Form**

You must submit this form (Table 2 and 3), duly filled in, along with the supporting as per following checklist given in Table 1:

<b>Table 1 Checklist for Supportings</b>	
<b>Supportings Required</b>	<b>Please (√)</b>
Latest Balance sheet filed with (Name of Authority) on (Date)	
Latest Profit & Loss Statement <b>from (date) to (date)</b> filed with (Name of Authority) on (date).	
Audited copies <sup>1</sup> of annual accounts and P & L account of <b>past 3 years</b>	
Certificate of Financial Soundness from Bankers of Bidder /Suppliers	
Income Tax Clearance Certificate (Latest)	
Sales Tax Clearance Certificate (Latest)	
Details of Income Tax Registration	
Details of Sales Tax Registration	
Organization Chart	
Annual Report of last three years	

---

<sup>1</sup> Indigenous Bidder/Suppliers must attach copy of accounts audited under section **44 AB of Income Tax Act**. In case the accounts need not be audited, a Chartered Accountant or Manager of a Nationalized Bank should attest the information in this statement.

**Table 2  
Financial Soundness**

<b>General Information</b>			
<b>Name</b>			
<b>Address</b>			
<b>Phones</b>			
<b>Mobile</b>			
<b>Fax</b>			
<b>E-mail</b>			
<b>Contact Personnel with designation</b>			
<b>Financial Information</b>			
<b>S N</b>	<b>Description</b>		<b>Value (Rs)</b>
1	<b>Cash</b>	In Bank	
		In Hand	
		Total	
2	<b>Fixed Assets</b>	Gross	
		Net	
3	<b>Current Assets</b>	Inventories	
		Others	
		Total	
4	<b>Current liabilities</b>	Bank Cash Credit	
		Sundry creditors	
		Others	
		Provisions	
		Contingent Liabilities (including claims not acknowledged, please specify)	
		Total	
5	<b>Capital</b>	Share capital	

		Free reserves	
		Other reserves (please specify)	
6	Term loans from financial institutions and banks		
7	Working capital		
8	Net worth		
9	Debtors and advances considered good	More than 6 months	
		Less than 6 months	

<b>Significant Financial Ratios</b>			
<b>SN</b>	<b>Ratio</b>	<b>Definition</b>	<b>Value</b>
1	Current	Current Assets to Current Liabilities	
2	Acid Test	(Cash + temporary investment held in lieu of cash + current receivable) / current liabilities	
3	Solvency	Total Liability to Net Worth	
<b>Net Profit before Tax</b>			
<b>SN</b>	<b>Period</b>		<b>Value</b>
1	Current period		
2	During the last Financial Year		
3	During the year before last Financial Year		
<b>Financial Arrangements</b>			
<b>SN</b>	<b>Resources</b>		<b>Amount</b>
1	Own		
2	Bank Credits		
3	Others (Specify)		

<b>Sales</b>			
<b>SN</b>	<b>Category of Customers</b>	<b>Value of orders to be executed/ anticipated Sales</b>	
		<b>Current</b>	<b>Next Financial Year</b>
1	Government Department		
2	Commercial		
3	Others		
	Total		
<b>Annual Turnover</b>			
<b>SN</b>	<b>Financial Year (Please begin with current year)</b>		<b>Turnover</b>
1			
2			
3			
4			
5			
6			



**Table 3  
Technical Competency**

<b>Classifications</b>		
<b>SN</b>	<b>Category</b>	<b>Please (√)</b>
1	Manufacturer	
2	Clearing & Forwarding Agent	
3	Stockist	
4	Wholesale Dealer	
5	Authorized Reseller	
6	Authorized Service Agent	
7	Retailer	
8	Trader	
9	Others (please specify)	
<b>Details on Plant</b>		
<b>SN</b>	<b>Plant</b>	<b>Details</b>
1	Location	
2	Description	
3	Type	
4	Size of building	
5	Is property on lease or free hold?	
6	If on lease, indicate date of expiry of lease in each case.	
7	Others (please specify)	

<b>Plant Facilities</b>					
<b>SN</b>	<b>Facilities</b>	<b>Ans</b>	<b>Remark</b>		
1	Space available for manufacturing (in m2)				
2	Space available for storage (in m2)				
3	Space available for inspection (in m2)				
4	Are buildings fire resistant? (Y/N)				
5	Are premises approved by Municipal fire Department? (Y/N)				
6	Are buildings under Municipal fire protection?				
7	Are power & fuel supply adequate to meet production requirements? (Y/N)				
8	Are adequate transportation facilities available? (Y/N)				
9	Are safety measures adequate for performance of proposed contract? (Y/N)				
10	Is adequate material handling equipment available? (Y/N)				
<b>Testing Facilities</b>					
<b>SN</b>	<b>Facilities</b>	<b>Details</b>			
1	List testing equipment available				
2	Give details of tests to be carried out on items offered.				
3	Details of the testing organizations available.				
<b>Quality Control Organization</b>					
<b>SN</b>	<b>Quality Control Method</b>	<b>Response</b>			
1	Are goods offered subject to Batch Test, Random Sampling or full 100% test for				
2	Are tests carried out by factory employees or by a separate testing agency?				
3	Are independent Quality Control Organization checks made and certificates				
<b>Manufacturing Capacity</b>					
<b>SN</b>	<b>Description of Equipment</b>	<b>Capacity</b>	<b>Units Manufactured</b>		
			<b>Current year</b>	<b>Last Year</b>	<b>2nd last year</b>
1					

2					
<b>Personnel/ Organization</b>					
SN	Personnel in	Numbers in levels			
		Managerial	Supervisory	Skilled Workmen	
1	Production				
2	Marketing				
3	Installation and commissioning				
4	Service				
5	Spare parts				
6	Administrative				
<b>Service Center nearest to our site location</b>					
<b>Location</b>					
<b>Phone no</b>					
SN	Information required on			Details	
1	Number of skilled employees				
2	Number of unskilled employees				
3	Number of engineering employees				
4	Number of administrative employees				
5	List of special repair/ workshop facility available				
6	The storage space available for spare parts (in m2)				
7	Value of minimum stock of spares available at all the service centres in respective currency				
8	List of the models/ types of equipment serviced by the Centre in last 2 years				

References <sup>2</sup>						
SN	Name of Organization	Address, Telephone, Fax, Contact Person				
1						
2						
List of components usually subcontracted						
1						
2						
Workload for the current and forth coming financial year on quarterly basis						
SN	Financial Year	Quarterly Workload as % of Total Capacity				
		I	II	III	IV	
1	Current Financial Year					
2	Next Financial Year					
List of major projects of similar size and nature previously executed						
SN	Name of the client	Project	Year of award	Year of completion	Capacity/ Products	Value (Currency)
1						
2						
3						
4						
Type of equipment manufactured and supplied (M & S) during last 2 years						
SN	Equipment	Capacity	Qty	Projects	On Hand Order Qty	
1						
2						
3						
4						

<sup>2</sup> Names of two buyers to whom similar equipment are supplied, installed and commissioned in the past and to whom reference may be made by the AmulFed Dairy, Gandhinagar regarding the Bidder/Supplier's technical and delivery ability:

<b>Type of equipment manufactured, supplied, installed and commissioned (MSIC)</b>					
<b>SN</b>	<b>Equipment</b>	<b>Capacity</b>	<b>Qty</b>	<b>Projects</b>	<b>On Hand Order Qty</b>
1					
2					
3					
4					
<b>Schedules for furnishing technical data and certified drawings after receipt of orders</b>					
1					
2					
<b>Number of weeks required for preparing a bid proposal</b>					

**Collaborators' Authorisation Form**

## Collaborators' Authorisation Form

Reference

Dated

**General Manager**

**AmulFed Dairy, Gandhinagar**

**Plot No. 35, Near Indira Bridge**

**Ahmedabad - Gandhinagar Highway**

**Vill.: Bhat, Dist.: Gandhinagar - 382428**

**Gujarat, India**

Dear Sir,

Bid Reference: MD/EXP/PKS/2015/1

We, (Name of the Collaborator), an established and reputable supplier of Technology and goods (Name of Technology & Goods ) do hereby authorize (Name and address of **Agents**) to bid, negotiate and conclude the contract with you against Bid Reference: MD/EXP/PKS/2015/1 for the above technology & goods supplied by us.

No company or firm or individual other than (Name of your sole agent/ distributor) are authorized to bid, negotiate and conclude the contract in regard to this business against this specific Bid. (Strike out this, if not applicable)

We hereby extend our full guarantee and, warranty for the technology and goods offered for supply against this invitation for bid by the above firm.

Yours faithfully,

(NAME)

For and on behalf of

(Name of Manufacturers)

Note:

This letter of authority should be on the Letterhead of the Collaborators' concern and should be signed by a person competent and having the power of attorney to bind the Supplier.